

XV2-2 Wi-Fi 6 Access Point

802.11ax Dual-Radio 2x2 Access Point

QUICK LOOK:

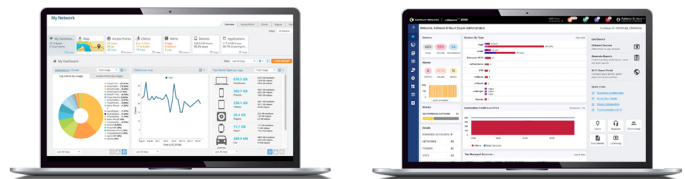
- Dual radios, 2x2
- 2.5 GbE uplink port, RJ45
- 1.77 Gbps aggregate data rate
- Application policy control
- EasyPass with Microsoft Azure and Google G Suite integration



WI-FI 6 DESIGNED FOR MOBILE DEVICES AND IoT

The XV2-2 is a dual-radio Wi-Fi 6 access point (AP) designed to deliver next generation networks with edge services at a value-based price. Wi-Fi 6 technology delivers higher network speeds and enables more connected devices at higher packet quality. Wi-Fi 6 brings a deterministic model to the radio frequency (RF) layer where the AP controls the client connections, including when to sleep, when to wake and how to transmit and receive packets. The XV2-2 is fully backward compatible with existing Wi-Fi technology and enables a massive growth of low power, low-bitrate IoT devices to add infrastructure intelligence into any market.

XV2-2 comes with Limited Lifetime Warranty providing return and repair service on the access point from date of purchase until end of life of the product.



CLOUD AND ON-PREMISES MANAGEMENT

XV2-2 continues the enterprise network convergence with edge-intelligent AP managed by application-intelligent Cambium Networks XMS or cnMaestro™ management system. Choose the management system that best fits your business and use the latest technology from Cambium Networks.

XV2-2 Wi-Fi 6 Access Point

Access Point Specifications

Note: Some features will be included on subsequent firmware releases.

FCC Ch 1-11, 36-48, 52-64, 100-144, 149-165

ISED Ch 1-11, 36-48, 52-64, 100-144, 149-165

ETSI Ch 1-13, 32-48, 52-64, 100-144

ROW (Individual country limits may apply)
Ch 1-14, 36-48, 52-64, 100-144, 149-165

Radios
5 GHz 802.11 a/n/ac Wave 2/ax, 2x2
2.4 GHz 802.11 b/g/n/ax, 2x2

Wi-Fi 802.11 a/b/g/n/ac Wave 2/ax

SSID Security WPA3, WPA2 (CCMP, AES, 802.11i), WPA2 Enterprise (802.1x/EAP), WPA PSK (TKIP), Open

Max PHY Rate
5 GHz radio 1,201 Mbps
2.4 GHz radio 573.5Mbps

Ports
1 x IEEE 10/100/1000/2500 Mbps
Auto sensing MDIX
1 x USB 3.0
1 x Serial Console (4 pin)

Antenna
5 GHz 6 dBi, Omni
2.4 GHz 5 dBi, Omni

Max EIRP
5 GHz 31 dBm
2.4 GHz 29 dBm

Power Max power 21 W, 802.3at powered device
15.4 W (802.3af) operation with reduced function settings
Typical 11 W (USB disabled)

Dimensions 195 mm x 195 mm x 50 mm
(7.68 in x 7.68 in x 1.97 in)

Weight 800 g (1.76 lbs)

Security Kensington lock slot

LEDs Multi-color status LEDs

Ambient Operation Temperature 0°C to 50°C
(32°F to 122°F)

Storage Temperature -40°C to 70°C
(-40°F to 158°F)

Humidity 95% RH non-condensing

MTBF

Mount Options Wall or ceiling, T-bar with included locking bracket, ceiling tile plate

Certifications (Compliance) Wi-Fi Alliance 802.11 a/b/g/n/ac/ax, PP2.0, FCC, IC, CE, EN 60601-1-2, EN 60950-1, IEC 62368-1 Safety, EN 60601-1-2 Medical, EN 61000-4-2/3/5 Immunity, EN 50121-1 Railway EMC, EN 50121-4 Railway Immunity, IEC 61373 Railway Shock & Vibration, UL 2043 Plenum, EN 62311 Human Safety/RF Exposure, WEEE & RoHS



Back Panel

XV2-2 Wi-Fi 6 Access Point

Management

Note: Some features will be included on subsequent firmware releases.



Cambium Networks XMS leverages intelligent APs with an embedded edge controller to deliver edge services at any network density. XMS management plane is a cloud-first technology with a simple and easy-to-use interface delivering application L7 policy-based control, EasyPass BYOD secure access, and an MSP dashboard with drag-and-drop design.



Cambium Networks cnMaestro™ uses a distributed intelligence architecture with cloud-first management and edge-intelligent APs that self-optimize for the RF environment. cnMaestro delivers a single pane-of-glass management for Cambium broadband fixed wireless, cnMatrix Ethernet switches, enterprise-grade Wi-Fi APs and service provider residential routers.

	XMS Management	cnMaestro Management
Deployment	Xirrus Management System (XMS-Cloud)	cnMaestro Cloud, cnMaestro on-premises, Standalone AP
Services	Deep Packet Inspection (DPI) Application Visibility and Control EasyPass Access Service	Monetized, cloud-managed guest portal with design tools
APIs	RESTful management and statistics API Location API	RESTful management and statistics API Location API Webhooks
Captive Portal	Web page redirect, landing page, redirect to internal or external server, landing page and authentication Client isolation per SSID, per network Client rate limiting per SSID EasyPass, Guest Ambassador Click-through authentication Microsoft Azure and Google G Suite SSO integration	Hosted on cnMaestro or hosted on site AP Redirect to HTTP/RADIUS external portal/authentication Active Directory integration, Google, Facebook, Office 365 integration Data rate, time duration, data throughput limit Server DNS logging, Hotspot 2.0/Passpoint 2.0 Credit Card Merchant billing, ePSK, Vouchers
Accounting	RADIUS accounting, load balancing AAA servers, Dynamic Authorization COA, DM	

XV2-2 Wi-Fi 6 Access Point

Network Specifications

Note: Some features will be included on subsequent firmware releases.

Operational Modes Standalone
Cloud managed cnMaestro or VM
Cloud managed XMS

WLAN 512 clients, 16 SSIDs
WPA3, WPA-TKIP, WPA2 AES, 802.1x
802.11w PMF

Authentication Encryption 802.1x EAP-SIM/AKA, EAP-PEAP, EAP-TTLS,
EAP-TLS MAC authentication to local database or external RADIUS

Scheduled WLAN On/off by day, week, time of day

Guest Access See "Captive Portal" section for additional details.

Data Limit Client bitrate/time/throughput limit per SSID

Subscriber QoS WMM

Fast Roaming 802.11r, OKC, Enhanced roaming

Mesh Multi-hop, either band

Channel Selection Multimodal channel selection with AutoChannel and AutoBand. Granular control of off-channel scan and channel selection

RF Management Multimodal RF optimization supporting AutoCell performed in the intelligent edge AP. Out-of-band RF spectrum analysis, radio self test network assurance, RF monitor with chn/noise/interference

Data rate pruning and minimum data rates

Network TCP connection log, NAT logging firewall, DHCP server, L2, L3 or DNS based access control, VLAN Pooling, RADIUS attribute VID VLAN per SSID per user

Band Steer Load Balance Yes

Tunnel L2TP, L2oGRE, PPPoE

Network and RF Management Tools Wired and wireless remote packet capture, auto logging, ZapD performance tool, rogue AP detection

Services NTP, Syslog, SNMP traps, DNS proxy, auto-off on WAN failure

Standards

Wi-Fi Protocols VHT MCS rates, 16/64/256/1024-QAM, 20/40/80 MHz

TWT, Long OFDM Symbol, Transmit beamforming, Airtime Fairness, AMSDU, AMPDU, RIFS, STBC, LDPC, MIMO Power Save, MRC, BPSK, QPSK, CCK, DSSS, OFDM, OFDMA, UL/DL MU-MIMO

IEEE 802.11 a/ac/ax/b/d/e/g/h/i/k/n/r/u/v

XV2-2 Wi-Fi 6 Access Point



Top View



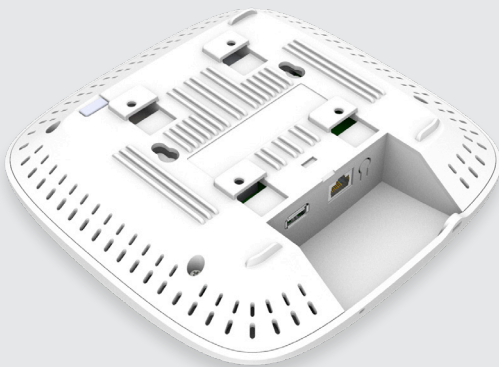
Top View



Left Corner



Right Side



Back Panel

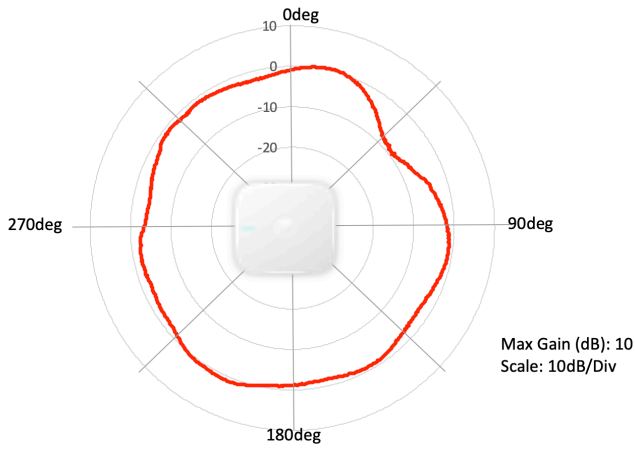


Back Panel

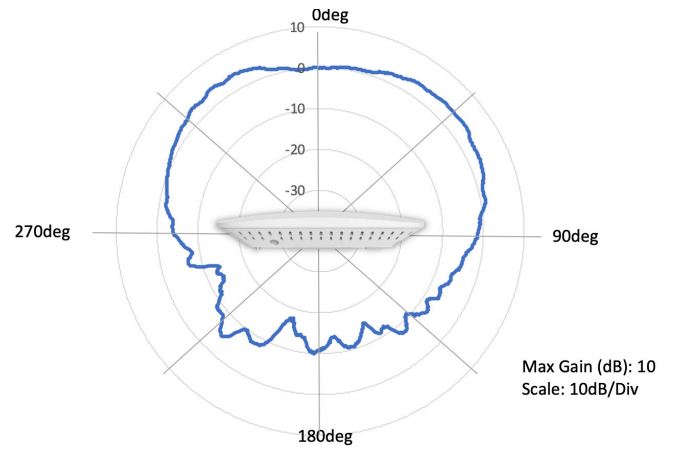
XV2-2 Wi-Fi 6 Access Point

Antenna Patterns

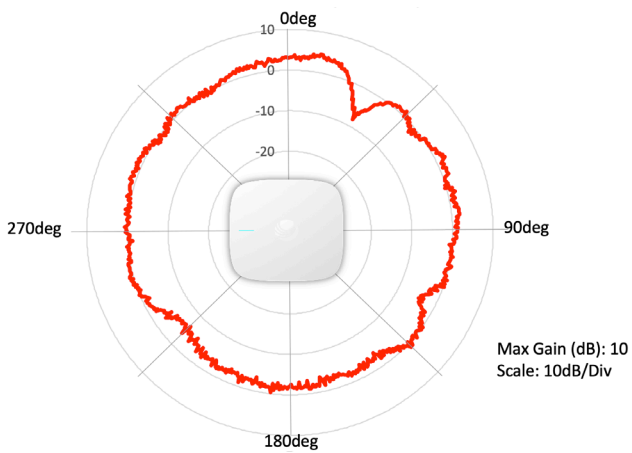
2.4 GHz Azimuth



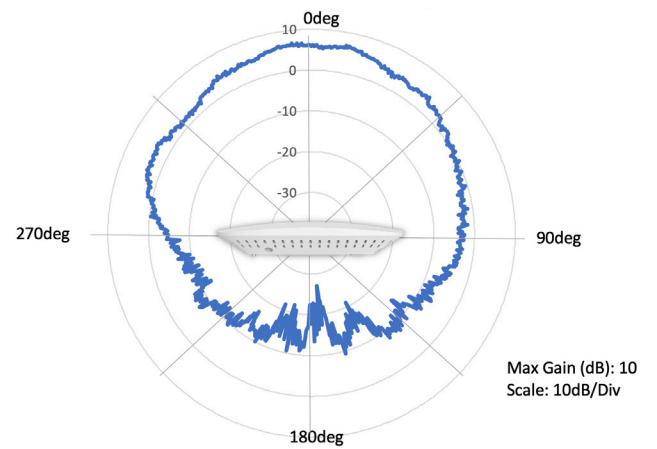
2.4 GHz Elevation



5 GHz Azimuth



5 GHz Elevation



XV2-2 Wi-Fi 6 Access Point

Cambium Ordering Information

XV2-2X00A00-US	XV2-2 Dual-Radio Wi-Fi 6. Indoor (FCC) SDR 802.11ax 2x2, US
XV2-2X00A00-CA	XV2-2 Dual-Radio Wi-Fi 6. Indoor (IC) 802.11ax 2x2, CA
XV2-2X00A00-EU	XV2-2 Dual-Radio Wi-Fi 6. Indoor (ETSI) 802.11ax 2x2, EU
XV2-2X00A00-RW	XV2-2 Dual-Radio Wi-Fi 6. Indoor 802.11ax 2x2, RW
XMSC-SUB-2R-1	XMS-Cloud 1-year subscription: 2-radio AP with EasyPass Guest Self-Registration and Guest Ambassador modules and Cambium Care Advanced Support
XMSC-SUB-2R-3	XMS-Cloud 3-year subscription: 2-radio AP with EasyPass Guest Self-Registration and Guest Ambassador modules and Cambium Care Advanced Support
XMSC-SUB-2R-5	XMS-Cloud 5-year subscription: 2-radio AP with EasyPass Guest Self-Registration and Guest Ambassador modules and Cambium Care Advanced Support
EASY-SUB-2R-1	EasyPass 1-year subscription for a 2-radio AP operating with XMS-Cloud or XMS-Enterprise
EASY-SUB-2R-3	EasyPass 3-year subscription for a 2-radio AP operating with XMS-Cloud or XMS-Enterprise
EASY-SUB-2R-5	EasyPass 5-year subscription for a 2-radio AP operating with XMS-Cloud or XMS-Enterprise
CCADV-SUP-XV2-2-1	Cambium Care Advanced, 1-year support for one XV2-2 Wi-Fi 6 AP. 24x7 TAC support, SW updates, and NBD advance replacement for HW
CCADV-SUP-XV2-2-3	Cambium Care Advanced, 3-year support for one XV2-2 Wi-Fi 6 AP. 24x7 TAC support, SW updates, and NBD advance replacement for HW
CCADV-SUP-XV2-2-5	Cambium Care Advanced, 5-year support for one XV2-2 Wi-Fi 6 AP. 24x7 TAC support, SW updates, and NBD advance replacement for HW
CCPRO-SUP-XV2-2-1	Cambium Care Pro, 1-year support for one XV2-2 Wi-Fi 6 AP. 24x7 TAC support and SW updates
CCPRO-SUP-XV2-2-3	Cambium Care Pro, 3-year support for one XV2-2 Wi-Fi 6 AP. 24x7 TAC support and SW updates
CCPRO-SUP-XV2-2-5	Cambium Care Pro, 5-year support for one XV2-2 Wi-Fi 6 AP. 24x7 TAC support and SW updates

XV2-2 Wi-Fi 6 Access Point

Cambium Ordering Information

Regulatory Model	REG-XV2-2
N000000L142A	PoE, 60W, 56V, 5GbE DC Injector, Indoor, Energy Level 6 Supply, accepts C5 connector
N000900L031A	AC line cord, US Type B, 720mm, C5 connector
N000900L032A	AC line cord, EU Type F angled, 720mm, C5 connector
N000900L033A	AC line cord, UK Type G angled, 720mm, C5 connector
N000900L034A	AC line cord, BR Type N, 720mm, C5 connector
N000900L011A	AC line cord, AU Type I, 720mm, C5 connector
N000900L012A	AC line cord, IN Type D angled, 720mm, C5 connector
N000900L013A	AC line cord, AR Type I, 720mm, C5 connector
N000900L015A	AC line cord, CN Type I, 720mm, C5 connector
N000900L048A	AC line cord, ZA Type M angled, 720mm, C5 connector

LIMITED WARRANTY

Cambium Networks XV2-2 Wi-Fi 6 Access Point includes a limited lifetime hardware warranty for a period of 5 years after end of sale.

ABOUT CAMBIUM NETWORKS

Cambium Networks delivers wireless communications that work for businesses, communities and cities worldwide. Millions of our radios are deployed to connect people, places and things with a unified wireless fabric that spans multiple standards and frequencies of fixed wireless and Wi-Fi, all managed centrally via the cloud. Our multi-gigabit wireless fabric offers a compelling value proposition over traditional fiber and alternative wireless solutions. We work with our Cambium certified ConnectedPartners to deliver purpose-built networks for service provider, enterprise, industrial, and government connectivity solutions in urban, suburban, and rural environments, with wireless that just works.